

# 2023 ANNUAL COMMUNITY ART SHOW

## CALL FOR ENTRIES

The Palos Verdes Library District invites local artists & students to submit artwork for our Annual Community Art Show held at the Peninsula Center Library.

Accepting submissions Sept. 1-25

Works in most media are accepted

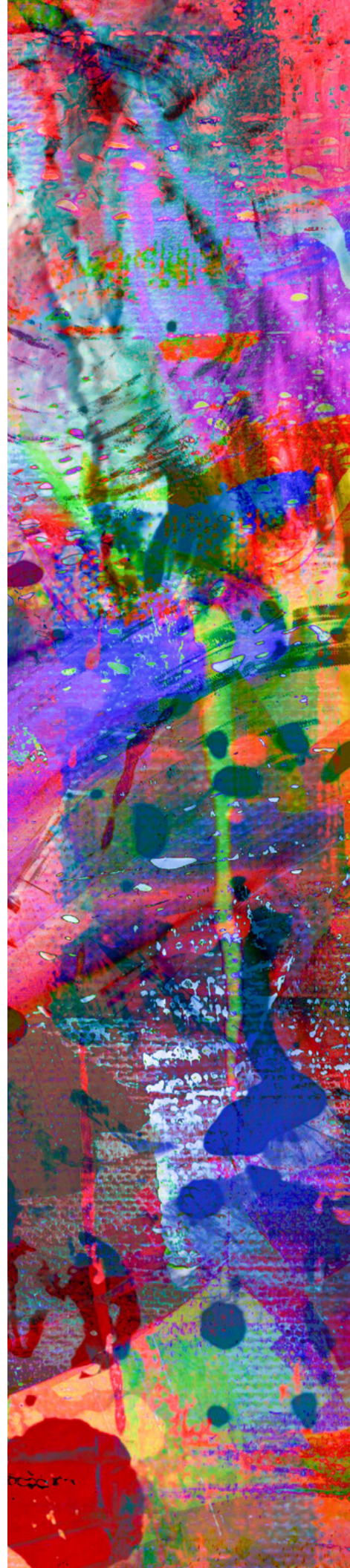
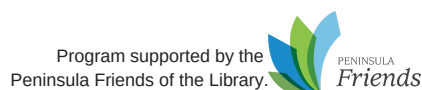
Entry fee: \$10 per piece, up to 2 pieces  
Student entry fee: \$5 per piece, up to 2 pieces

See reverse for guidelines & application

Artwork on display: Nov. 6 – Jan. 4

For more information, contact:  
310.377.9584 ext. 601  
artinourlibrary@pvld.org

**APPLY ONLINE AT:  
WWW.PVLD.ORG/ARTINOURLIBRARY**





# ANNUAL COMMUNITY ART SHOW ENTRY FORM

Name \_\_\_\_\_

Address \_\_\_\_\_  
\_\_\_\_\_

Phone \_\_\_\_\_

Email \_\_\_\_\_

Website \_\_\_\_\_

Students Grades 9-12: (List Age/Grade/School)  
\_\_\_\_\_

## Entry 1

Title \_\_\_\_\_

Art Category (select one below):

Work on Paper  Painting  Photography  3D Work

Medium \_\_\_\_\_

Price or NFS \_\_\_\_\_

Size (HxWxD) \_\_\_\_\_

## Entry 2

Title \_\_\_\_\_

Art Category (select one below):

Work on Paper  Painting  Photography  3D Work

Medium \_\_\_\_\_

Price or NFS \_\_\_\_\_

Size (HxWxD) \_\_\_\_\_

**Mail or drop off\* your completed entry form, fee, artist statement/bio (100 words max. length), and photocopies of your entries to:**

Palos Verdes Library District  
Attn: Lessa/Art Show  
701 Silver Spur Road  
Rolling Hills Estates, CA 90274

\*Entry drop-offs only during Administration open hours, Monday-Friday, 10-5.

Visit [www.pvld.org/artinourlibrary](http://www.pvld.org/artinourlibrary) for more information

## Entry Guidelines

Applicants may apply online at [www.pvld.org/artinourlibrary](http://www.pvld.org/artinourlibrary) or via paper form.

**Entry Fees:** \$10 per entry. Participants may submit up to 2 entries. Students Grades 9-12: \$5 per entry. Participants may submit up to 2 entries. All applicants may pay by check or credit card in the 2nd floor administration office at the Peninsula Center Library, Monday - Friday, 10am-5pm. Online applicants may also pay online by credit card. Make checks payable to: Palos Verdes Library District

**Participants must be in 9th grade or at least 14 years old by November 1, 2023.**

**Submitting Entry Images:** Online applicants must upload an image of the entry to the online form. Paper applications, must include a photograph or photocopy of each piece of artwork.

**PVLD reserves the right to choose the artwork included in the show and the placement area of the artwork.** All accepted work may be marked NOT FOR SALE (NFS) or FOR SALE. Artwork for sale is sold as is. All sales are final. If an item is for sale, please indicate the price you will accept. PVLD will retain a 20% commission fee on all sold items and does not collect sales tax. If an item is sold, PVLD will remit the sale price, minus 20% commission, 3-4 weeks after the conclusion of the show. All artwork must remain in the show for the entire duration.

**Artwork Drop-off:** Each accepted work must be hand delivered and properly prepared for hanging or display. The artist is responsible for drop-off and pick-up. Artwork drop-off and pick-up is during specified times only or with prior arrangement. No shipped pieces will be accepted. Bags, boxes, and other transportation protectives will not be retained for pickup of artwork at the end of the show.

**Art Preparation:** Artwork not ready to hang upon delivery will not be accepted. Art should be properly framed, and/or finished on all edges and must include wire for hanging unless it is a 3-D piece. If not framed, textiles and quilts must supply hardware for display. Heavy or over-sized work, 60 lbs or over 72" in any direction will not be accepted due to space limitations. All work must be labeled with artist's contact information.

**Awards:** Award categories listed will each receive a \$100 prize: Best in Show, Best in Highschool, Works on Paper, Paintings, Photography, 3D works, and People's Choice.

**Liability and Conditions:** Entry implies agreement with all conditions set forth in this prospectus. Utmost care and caution will be used in handling all art pieces during the installation and throughout the exhibition period; however, the artist agrees that PVLD will not be held responsible for loss or damage to art. (Gallery attendants will not be present during the exhibition period.) There are no refunds on entry fees nor guaranteed acceptance that any or all entries will be accepted. Entry submissions will not be returned. PVLD reserves the right to use photographic reproductions of works in the exhibition for publicity and other promotional purposes. If necessary, PVLD also reserves the right to change the dates and times of the exhibit.

I have read and agree to the conditions set forth in the prospectus and guidelines. I hereby release the Palos Verdes Library District, its representatives, associates, and volunteers from responsibility in the event of loss or damage to artwork(s) while in the possession of PVLD.

Signature: \_\_\_\_\_ Date \_\_\_\_\_